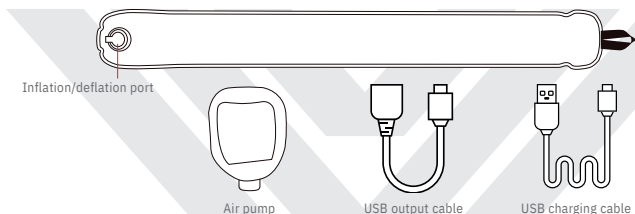


# Solar light

## Specification:

Maximum brightness: 339 lm  
Input/output: 5 V / 2 A (adapter not included)  
Battery: 4000 mAh  
Charging time: Solar / USB: 20 – 24 hours / 3 – 4 hours  
Rozměry: 86 × 12 cm  
Hmotnost: 275 g



## Specification for turning on white light:

1. Press the right power button once to turn on 10% white light – sleep light.
2. Press the right power button twice to turn on 100% white light – high brightness light.
3. Press the right power button three times to turn off the white light.

## Specification for turning on coloured light:

Press the left power button 1-9 times. The light switches between colours: orange, red, yellow, green, blue, purple, and SOS. Press and hold the left button to turn off the light.

## Specification:

Maximum brightness: 339 Lumens  
Dimensions: 86 × 12 cm  
Battery: 4000 mAh  
Input/Output: 5 V / 2 A  
Magnets: 2 pcs  
Solar/USB charging at full power: 20–24 h / 4 h

Input/output charging cable: 1 / 1 ks  
Phone charging: 1–2×  
Water resistance: IP66  
Weight: 275 g

**BUSHMAN®**

## Operating time:

10 % sleep light: 50 h +  
100 % light: 4 h  
100 % red SOS light: 10 h

## Charging

The light can be charged using solar energy and a USB charger. Connect the supplied USB cable to the USB port on the light and the other end to the USB adapter. The charging indicator flashes red during charging and lights up red when fully charged. The blue battery indicators show the current battery status. If all indicators are blue, the light is fully charged. If the status of all indicators decreases or no blue indicators are lit, the light needs to be recharged. You can check the battery status using the status indicators.

## Use

- Open the air vent on the light and inflate it carefully.
- Close the air valve.
- Turn on the light with the power button. Turn it off with the power button after use.
- Open the air valve and press it down to slowly deflate the light and fold it up.

## Emergency charger

To use the tube as an emergency charger, connect the USB output cable to the light and the charging cable to your phone.



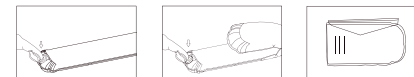
## Inflating

The light has a closable air valve and can be inflated by blowing air directly through the air valve. Alternatively, you can use an air pump to inflate it.



## Deflating

Open the inflation/deflation aperture and press down on the aperture with your finger to release the air. To ensure the air is completely deflated from the light, fold it from the other end of the air valve and you can push the air out.



## Safety Information

The light is not a toy. Keep out of reach of children. Do not forcibly push down on the light or pull it up, as this may cause damage. The light contains a rechargeable lithium-ion battery that cannot be replaced.

**BUSHMAN®**